

THE DARTMOOR LINE

Credit Becky Bettsworth

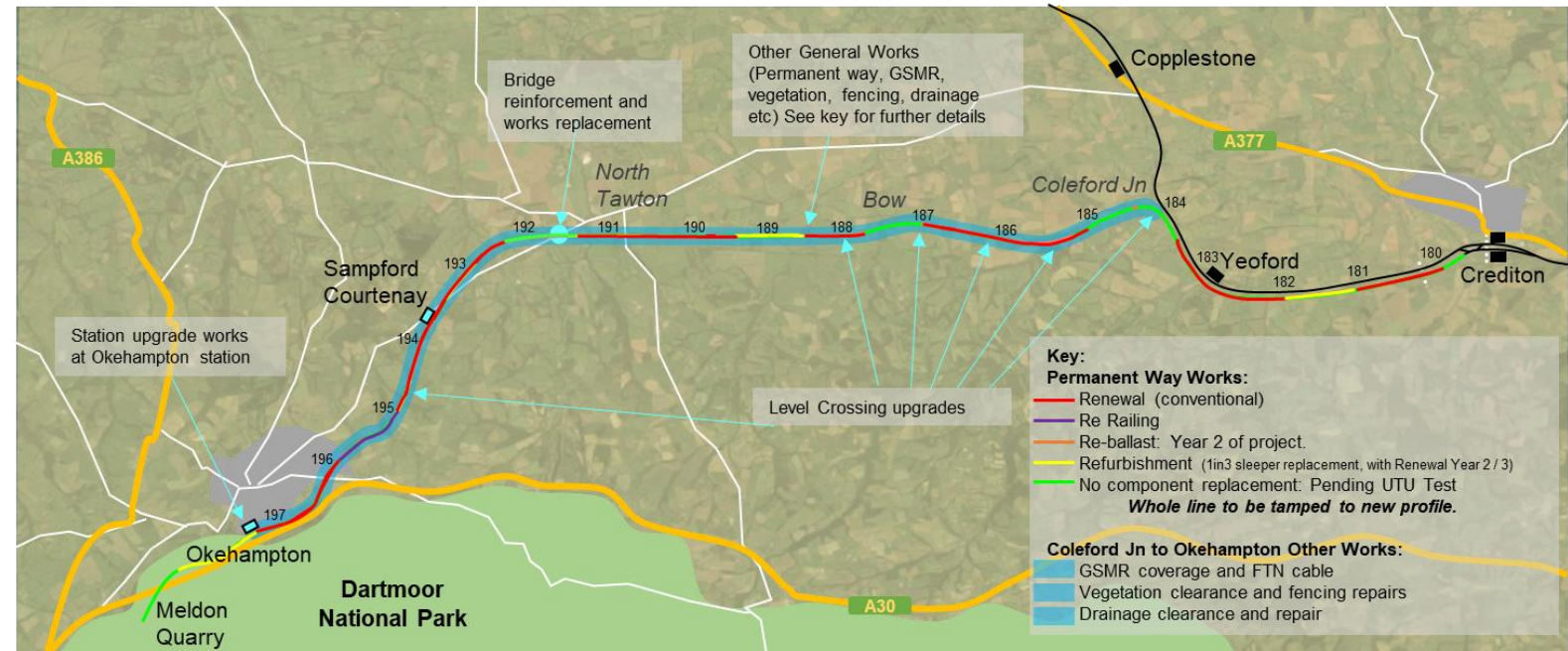
Okehampton: The Dartmoor Line

Working in partnership with Devon CC and the DfT to reopen the Dartmoor Line during 2021, as the first Restoring your Railway scheme.

NR have taken ownership of the railway and upgraded the route to modern standards.

The Dartmoor Line Progress:

- We have completed negotiations to purchase the line to Meldon Quarry and the Okehampton station has also been transferred to us.
- Construction of line complete, with ongoing work at the station and GSM-r and level crossing sites ongoing.
- Project being jointly delivered by NR and GWR in alliance.



Dartmoor Line Staged Upgrades			
Infrastructure Upgrades	Passenger	Freight	
CP6	0. Advanced Works	No service	No service
	1. 2 Hourly Reopening Works	2 Hourly	No service
	2. Hourly Upgrade Works	Hourly	No service
CP7	3. Freight Capability	Hourly	Daily







Okehampton: The Dartmoor Line

Significant infrastructure works required to reopen the line.

Large scale materials were delivered and used during construction.











4a – Construction Update



Coper adjustments



GSMR install



Trough for lighting & CIS cables



Greenslade Bridge timbers



Two Hourly Services by end of 2021

- Two hourly service, seven days a week, between Okehampton, Crediton and Exeter St Davids.
- Approximately half of weekday services extended to Exeter Central, including the key peak services. Weekend services to be extended to Exeter Central at a later date.
- Additional infrastructure work will take place on the route to enable introduction of hourly services during 2022.
- Services will be formed of Class 150s but the route will be clear for both Class 158 and 16x as well.
- Station upgrade to be completed at Okehampton with heritage ambience and community involvement both maintained.
- Extensive comms and marketing campaigns planned including joint launch website for the route. (dartmoorline.com)





THE
DARTMOOR
LINE

OPENING 20 NOVEMBER 2021

EXETER - CREDITON - OKEHAMPTON


Bobby Bettesworth

